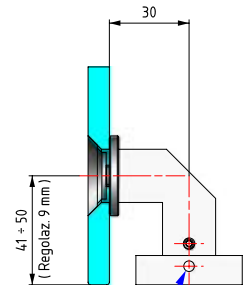
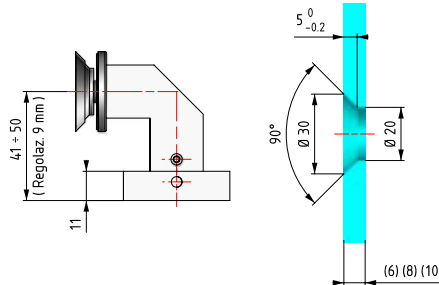
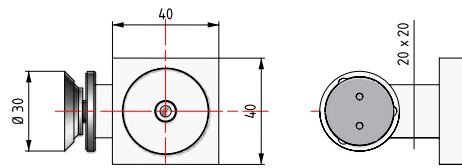
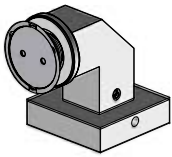


## 4Q12



- Morsetto Hip-q vetro/muro. Base quadra.
- Abrazadera Hip-q vidrio/pared. Base cuadrada.
- Hip-q wall to glass clamp. Square base-ment.
- Hip-q Glassplattenträger Wand/Glas. Vierkantige Grundlage.

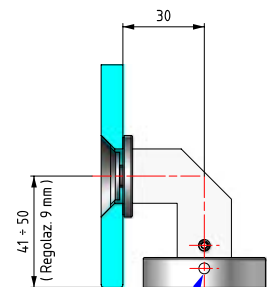
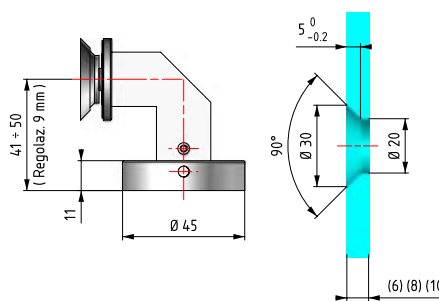
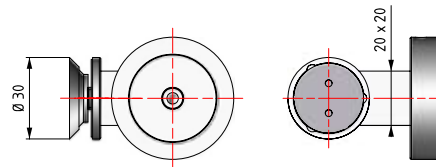
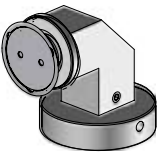


FORO FUORIUSCITA ACQUA  
DA TENERE RIVOLTO VERSO IL BASSO  
THE HOLE FOR WATER RUN-OUT  
HAS TO BE POSITIONED DOWNWARDS

## 4Q13



- Morsetto Hip-q vetro/muro. Base tonda.
- Abrazadera Hip-q vidrio/pared. Base redonda.
- Hip-q wall to glass clamp. Round base-ment.
- Hip-q Glassplattenträger Wand/Glas. Abgerundete Grundlage.



FORO FUORIUSCITA ACQUA  
DA TENERE RIVOLTO VERSO IL BASSO  
THE HOLE FOR WATER RUN-OUT  
HAS TO BE POSITIONED DOWNWARDS

## 4Q20



- Sistema di fissaggio Hip-q sezione qua-dra 2 punti fissi vetro.
- Unión 2 lunas Hip-q sección cuadrada: dos puntos fijos vidrio.
- Hip-q fixing system with square sec-tion. 2 fixed points on glass.
- Hip-q Befestigungssystem mit vierek-kiger Schnittfläche. 2 fixe Punkte am Glas.

